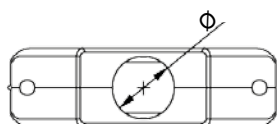
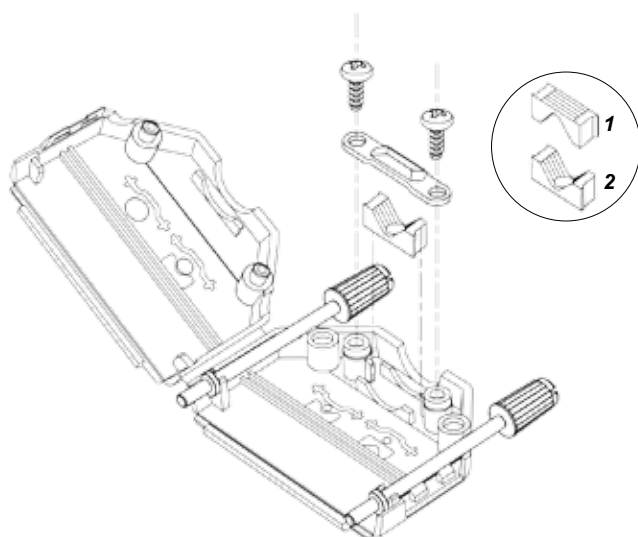


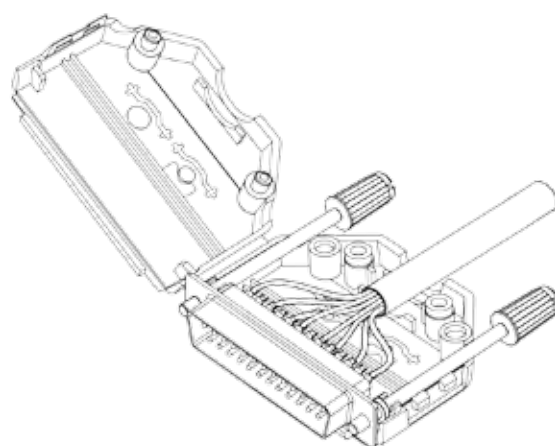
Assembly Instruction DPPK-SLIM Series



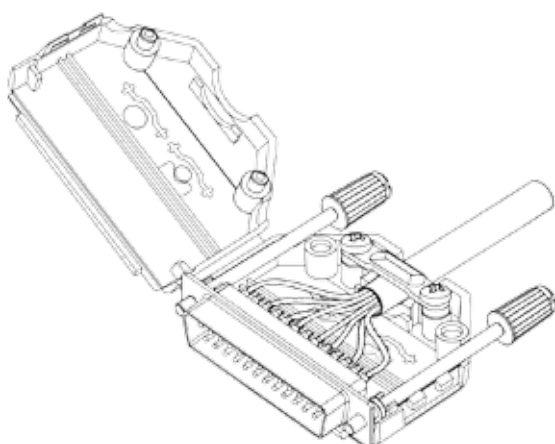
Max. Cable O.D.: 9-way: 8mm
15-50-way: 12mm



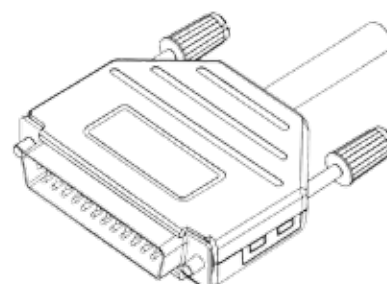
1: Please decide if option 1 or 2 suits your assembly depending on the cable outer diameter. The plastic V-shaped insert can also be left out if cable outer diameter is large enough.



2: Place the connector with mounted cable inside the connector hood together with ferrule. Put the Thumbscrews in place.



3: Mount the cable clamp and self-tapping assembly-screws. Maximum recommended Torque is 0,25Nm.



4: Close the connector hood by flipping the top cover into place. Your assembly is ready!